

ST. LOUIS ARTS CHAMBER OF COMMERCE

# PURPOSEFUL DESIGN

WHO WE ARE

ESTABLISHED  
1994

headquarters

ST. LOUIS

missouri

40 MILLION+  
SQUARE FEET  
PLANNED INTERIORS

wbe

WOMEN  
BUSINESS  
ENTERPRISE

32 DEDICATED TEAM  
MEMBERS

10

ART  
EXPERTS



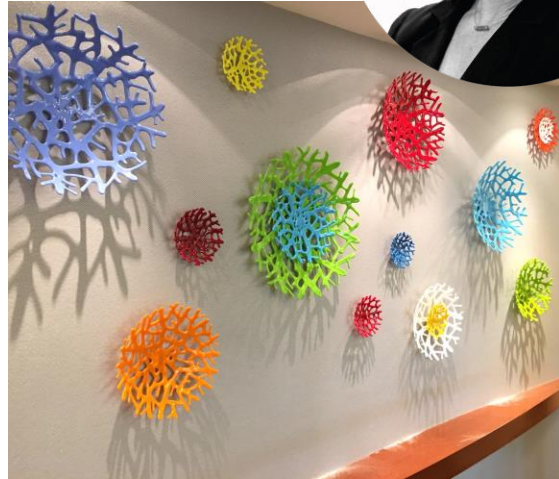
1.2MM+ PIECES OF  
ARTWORK  
INSTALLED

MEMBER OF  
7 GPOs  
INCLUDING vizient™

spellman brady & company

WHAT WE DO

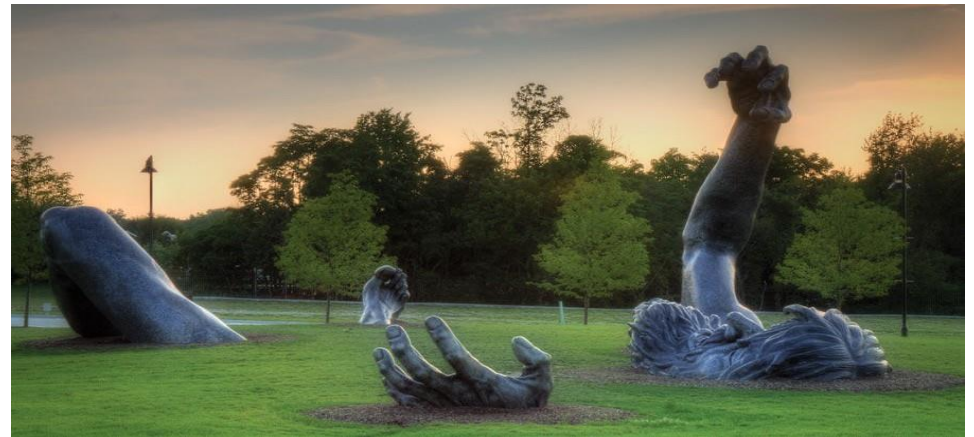
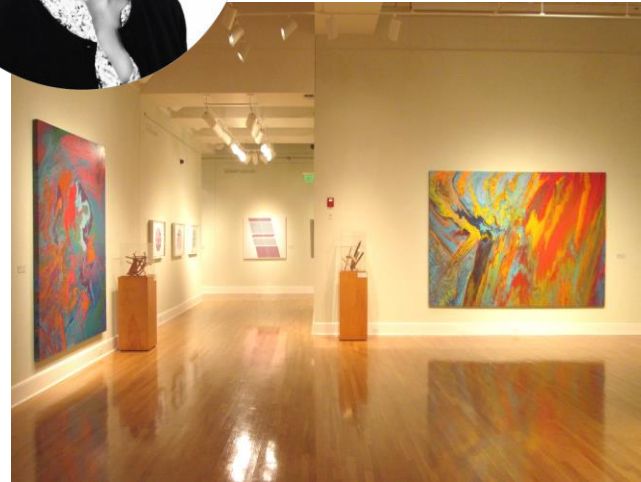
MICHELLE HAMILTON  
Director of Business Development



BFA, Miami University  
MFA, Washington University in St. Louis



NICOLE DUTTON  
Project Manager | Senior Art Consultant



spellman brady & company

BA Psychology, Greenville University  
MFA Painting, Fontbonne University

## OUR SERVICES



Artwork Master Planning

Large Scale Interior & Exterior Installation

Call for Art

Consulting & Management

Custom Commissions

Specification & Procurement

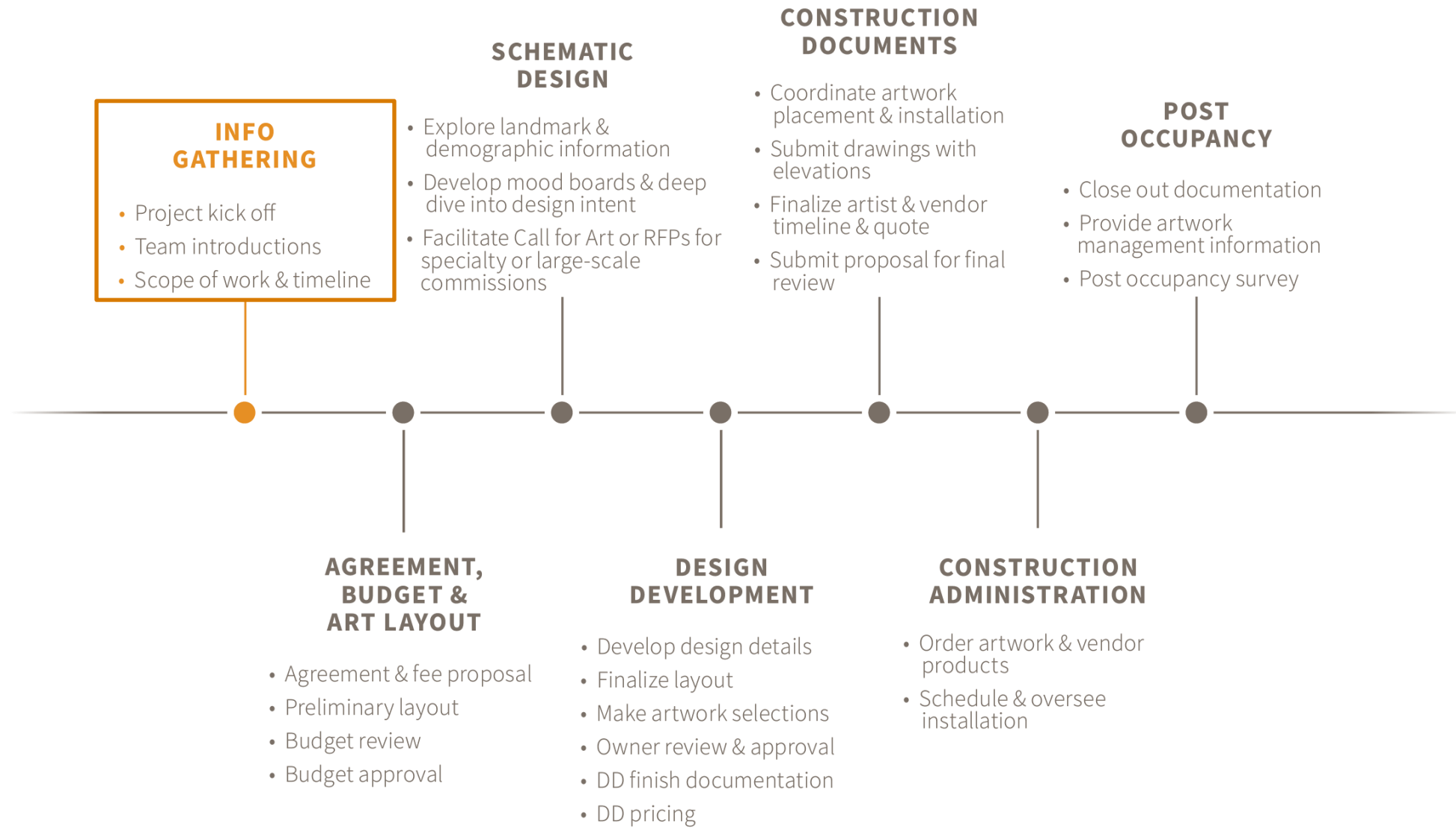
Installation

Conservation Collection Management

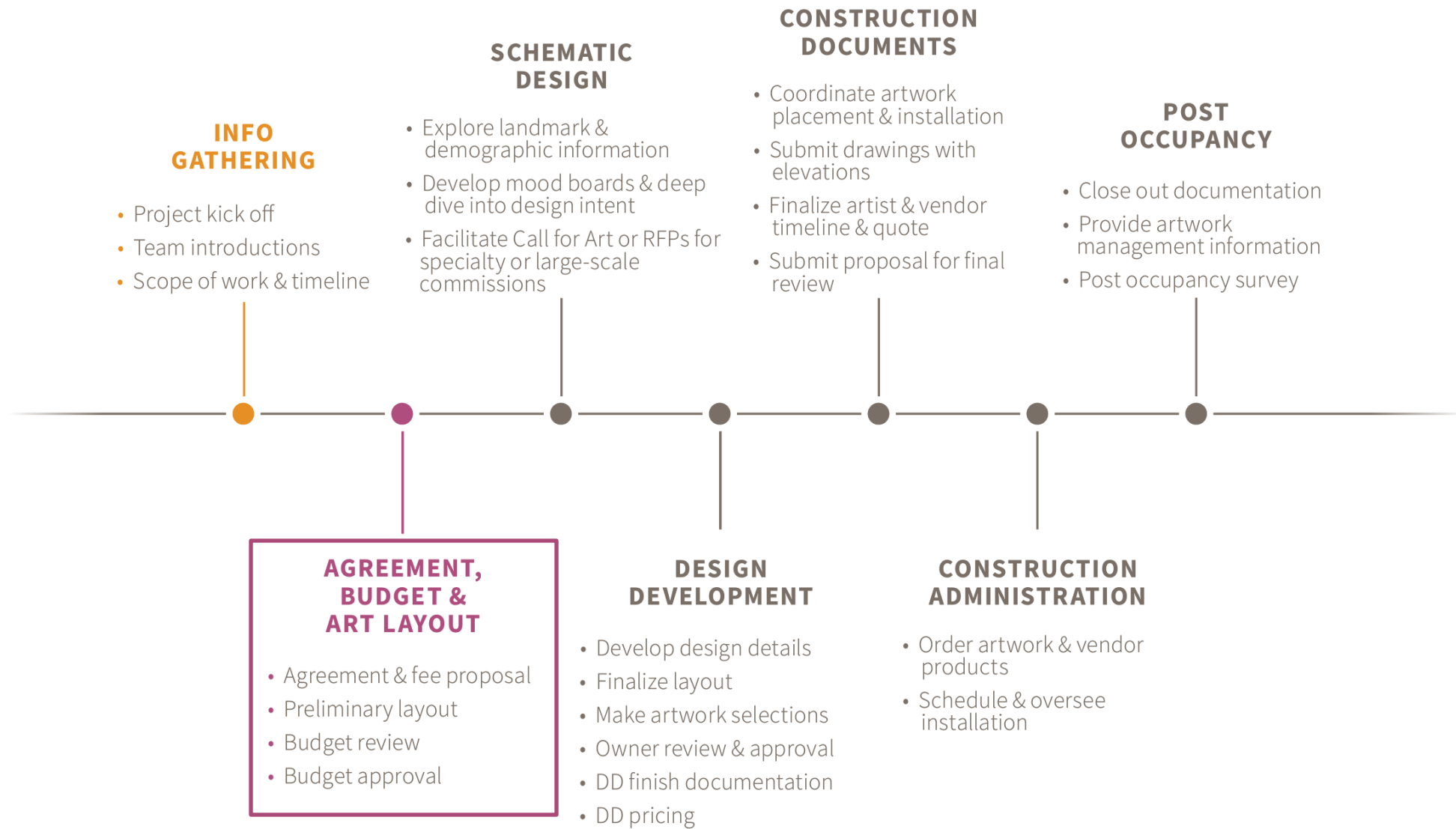


spellman brady & company

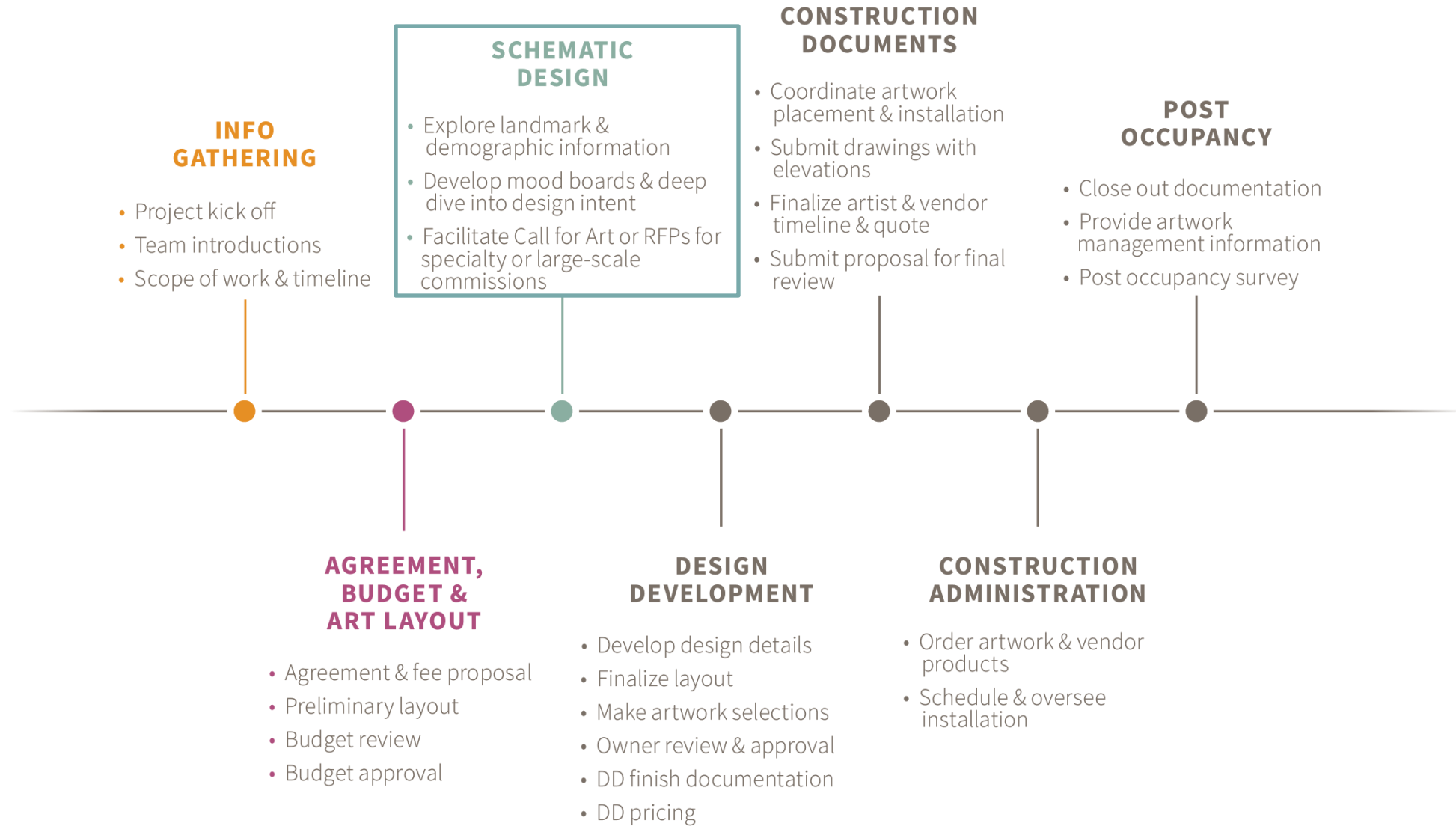
# OUR PROCESS



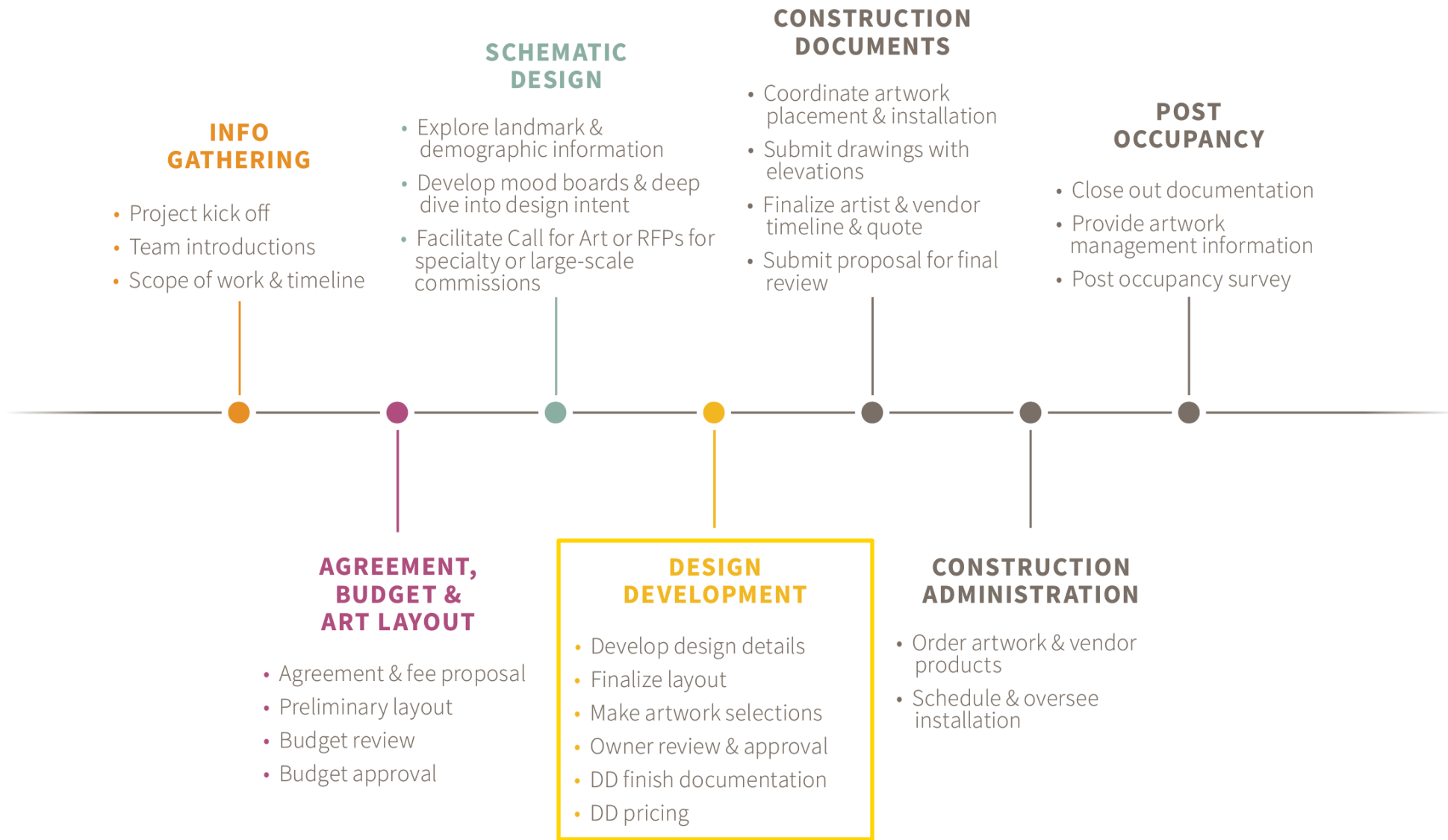
# OUR PROCESS



# OUR PROCESS

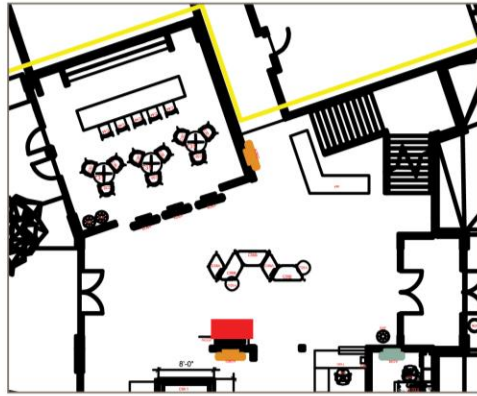


# OUR PROCESS





# DESIGN DEVELOPMENT



level 1 artwork plan  
not to scale



finishes throughout project

- COMMISSION
- 26" square
- local stl artist
- artist to be given paint colors for inspiration
- artist to deliver to site

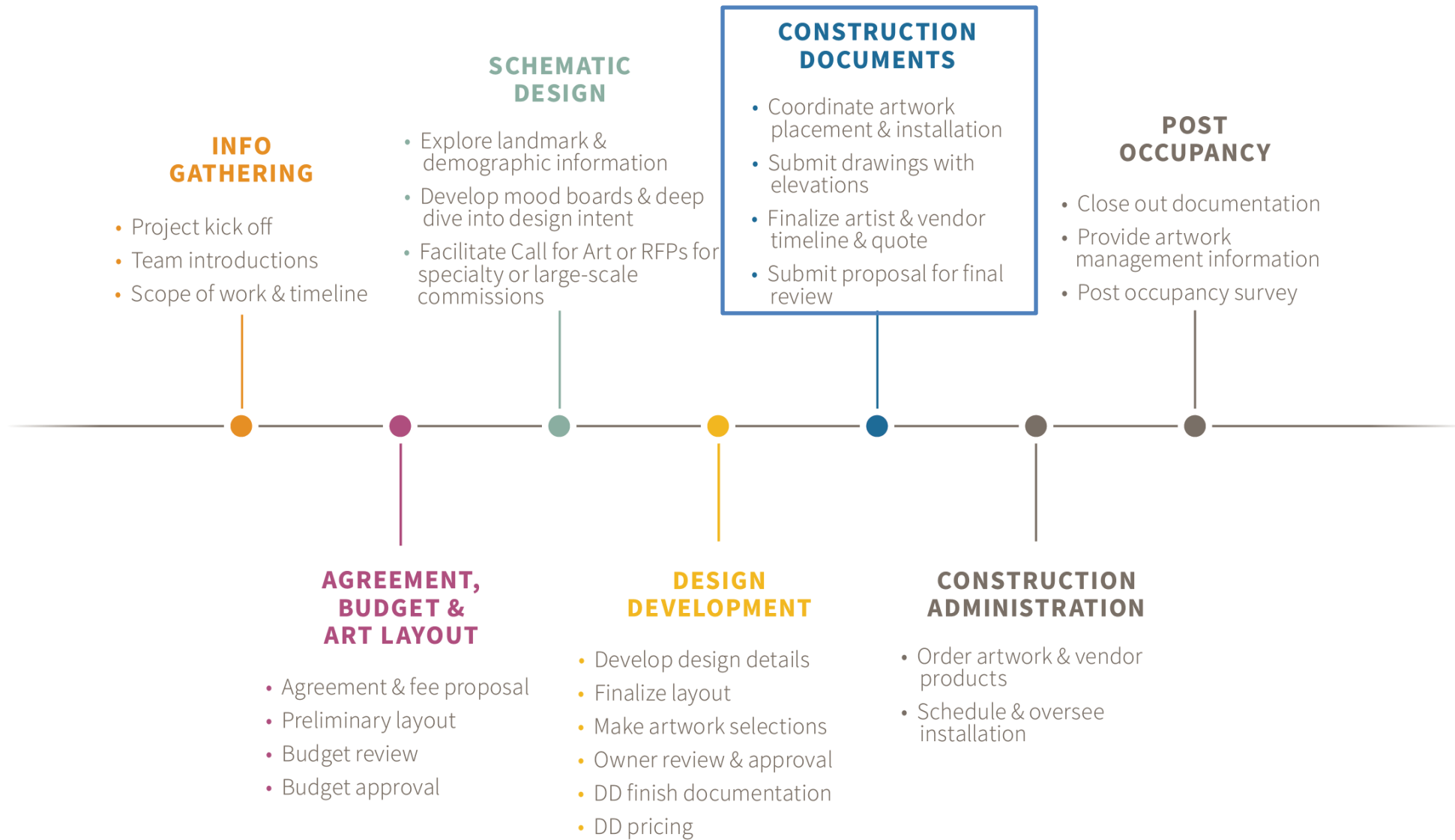
level 1 | lobby fine art



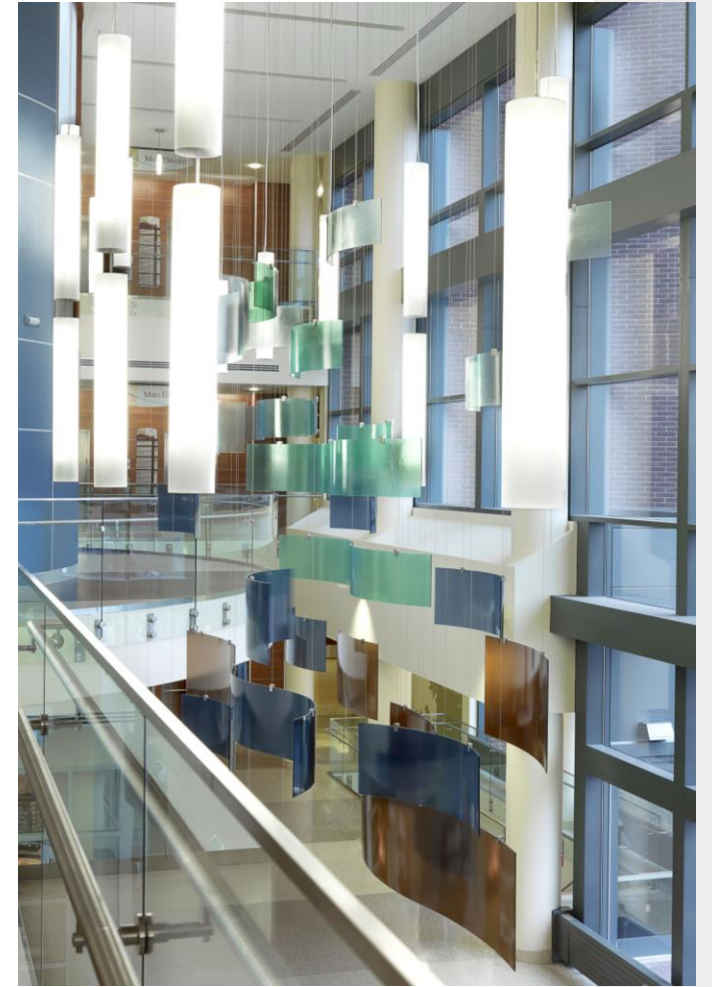
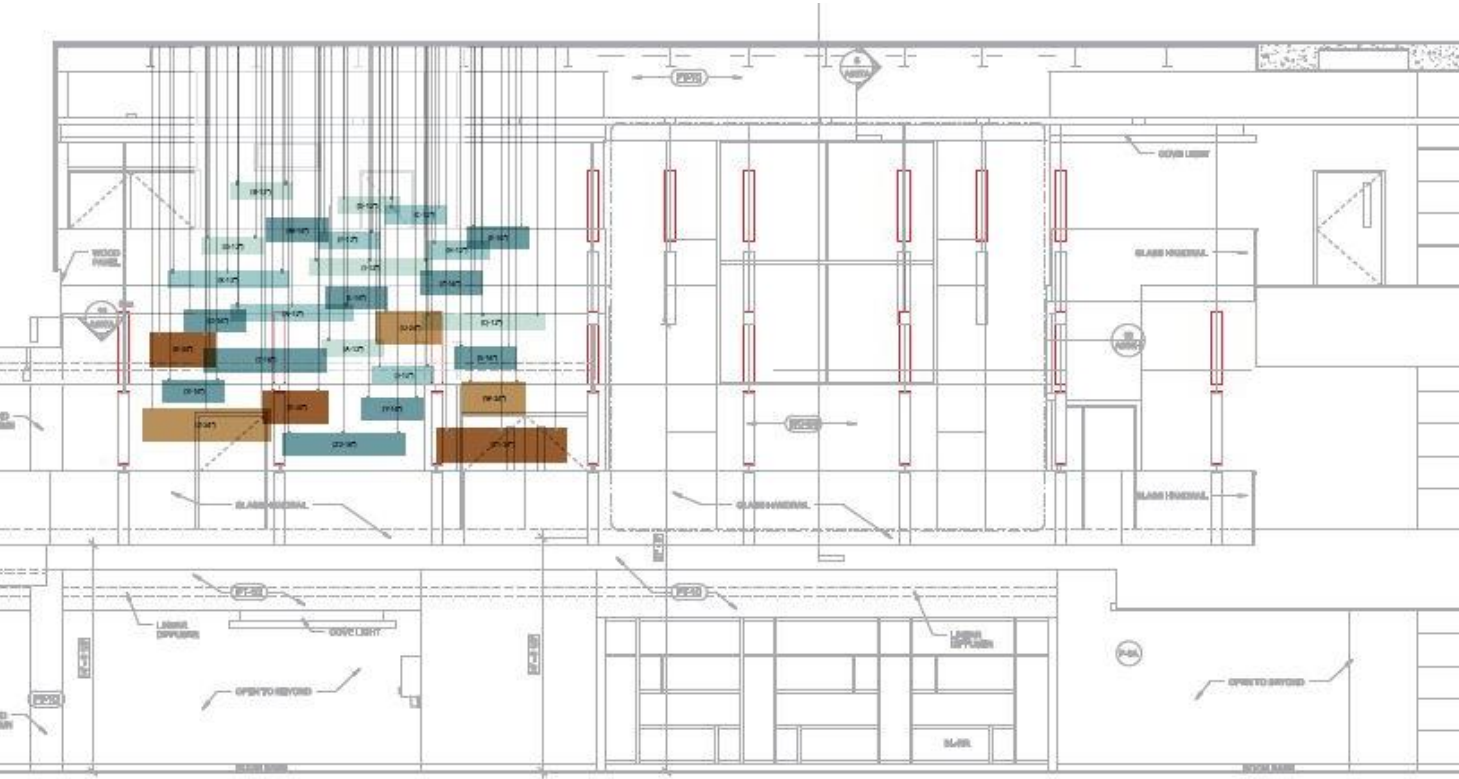
spellman brady & company

Terra at the Grove

# OUR PROCESS

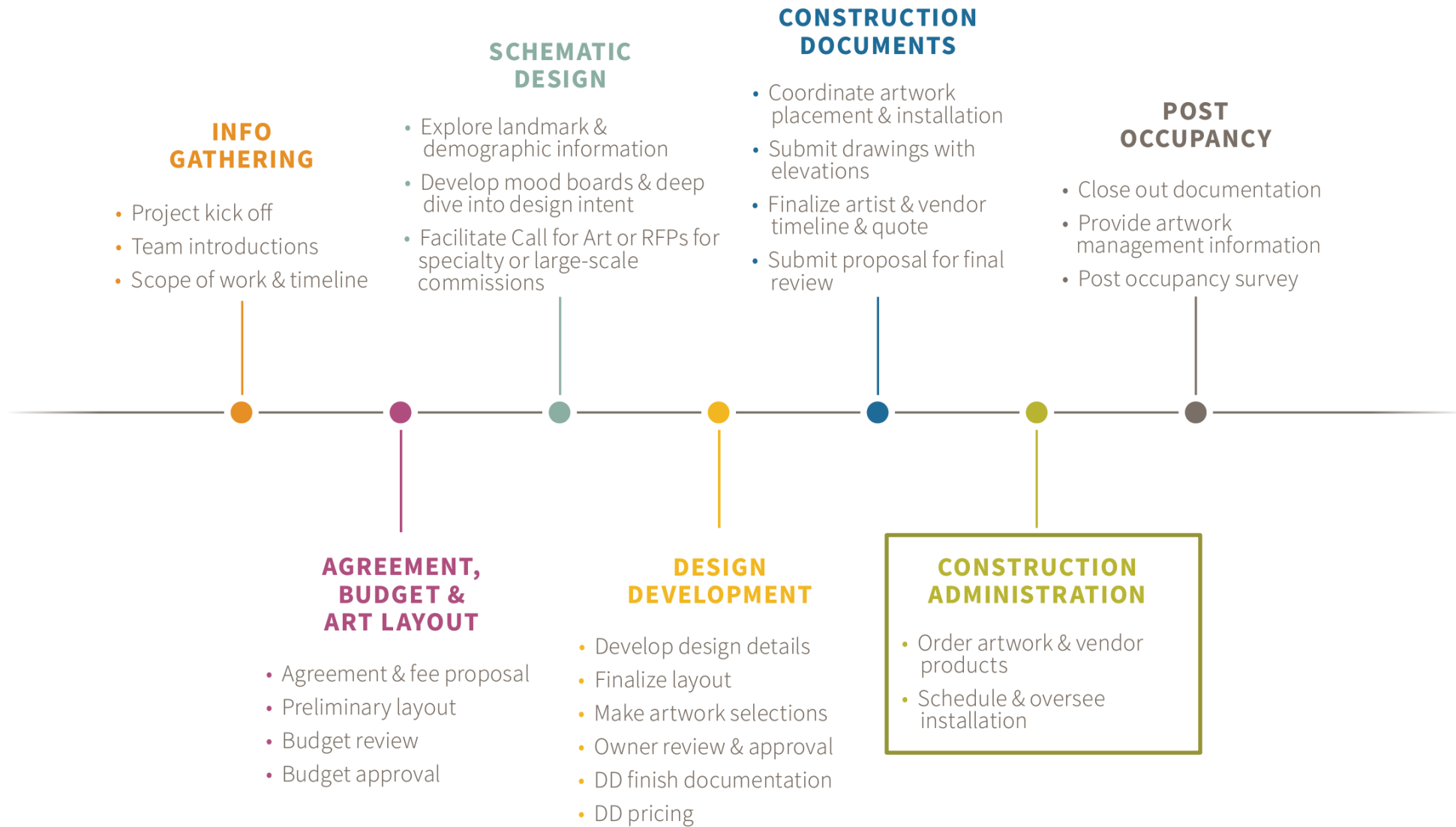


# CONSTRUCTION DOCUMENTS

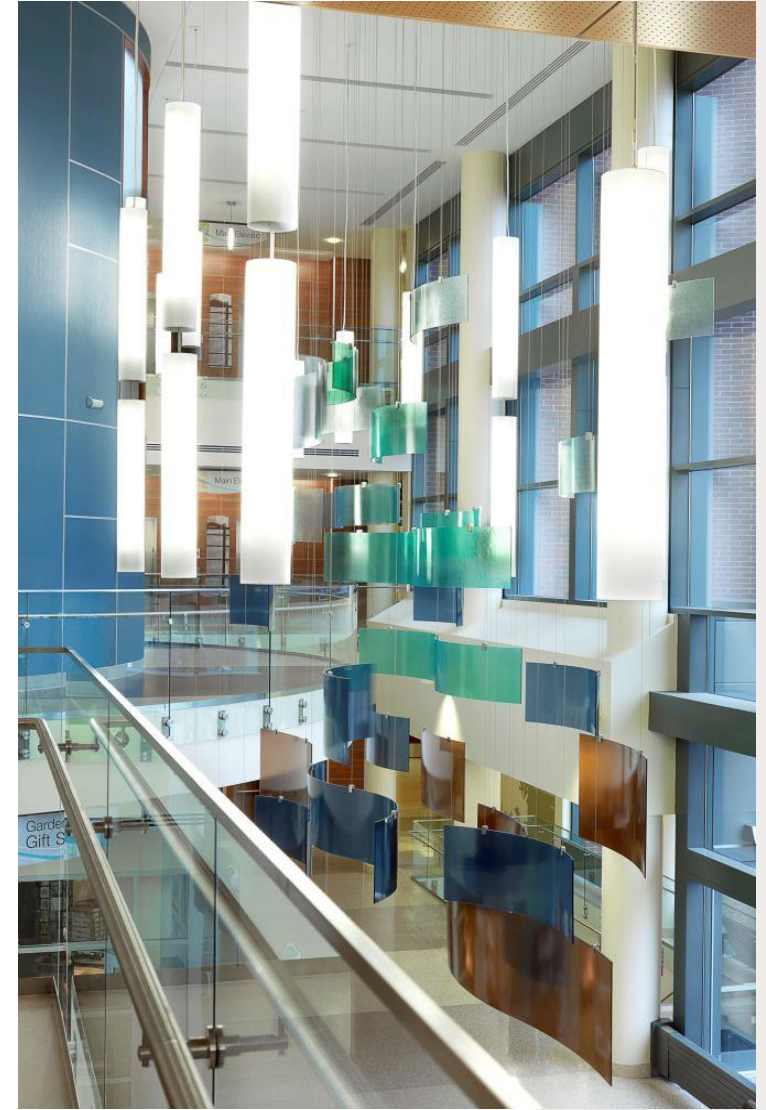


Springfield Regional Medical Center

# OUR PROCESS

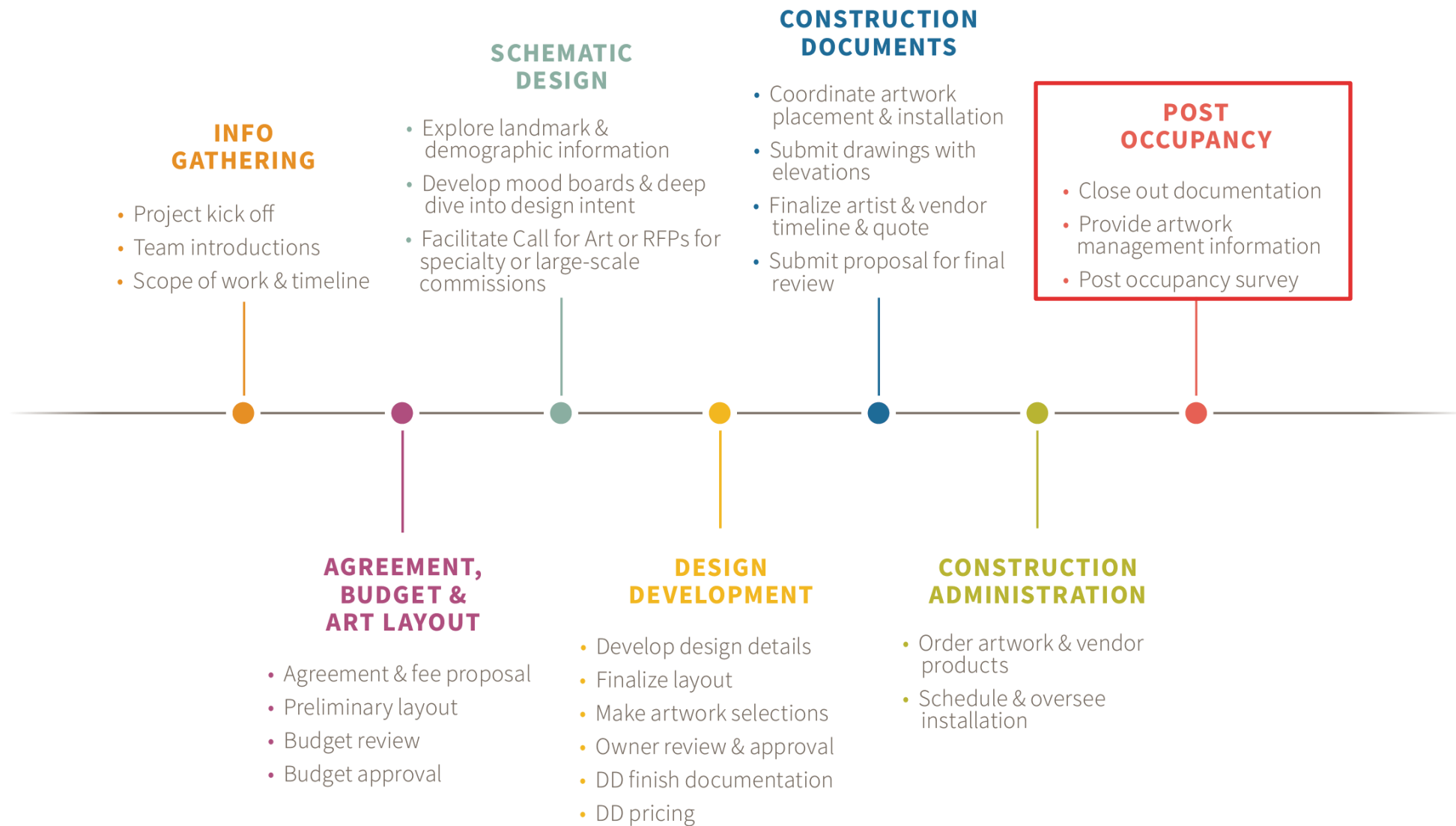


# CONSTRUCTION ADMINISTRATION



spellman brady & company

# OUR PROCESS



## TYPES OF ART

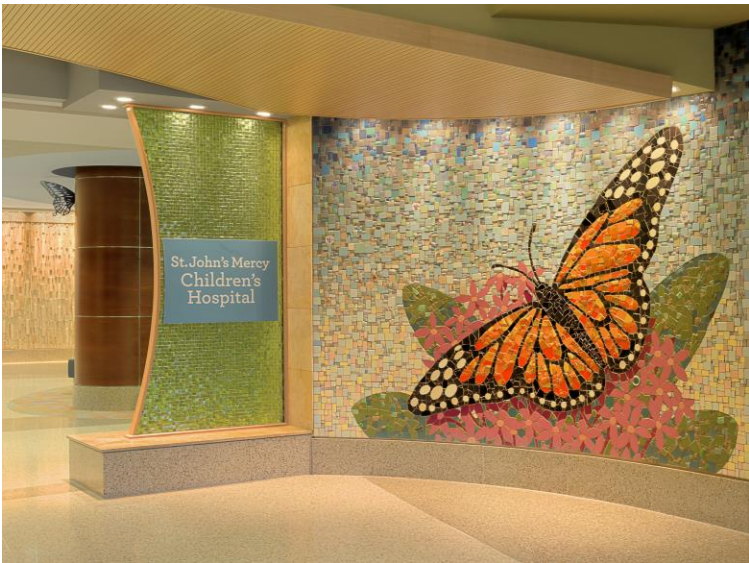
### SUBJECT MATTER



### MEDIUMS

- Paintings
- Drawings
- Textile
- Glass
- Ceramic
- Metal
- Photography/Digital Art
- Tech Art
- Interactive Art
- Installation Art
- Found objects/assemblages
- Prints
- Other

## ART USAGE

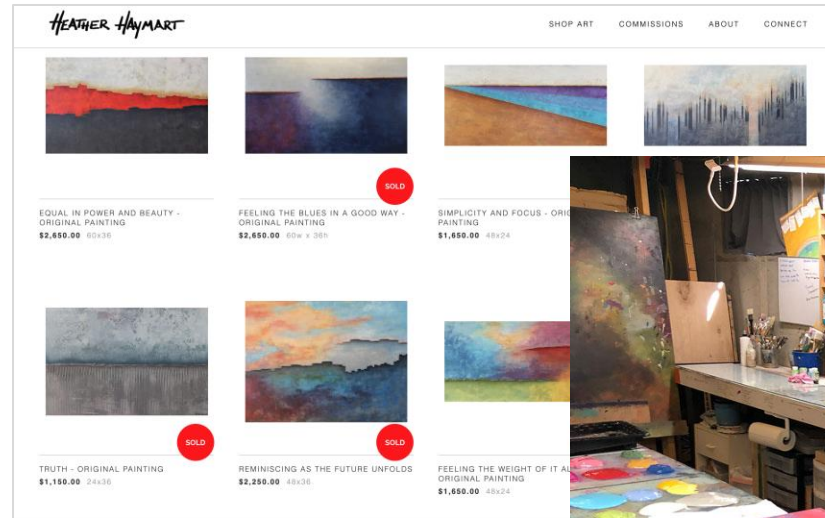


spellman brady & company



# ARTIST PORTFOLIO PREP

- ✓ Photography
- ✓ Contact Sheet
- ✓ Pricing
- ✓ Resume
- ✓ Portfolio



Heather Haymart | St. Louis, MO

<https://www.heatherhaymart.com/>

# CONTACT SHEET

## Sample Price Sheet- All prices shown are wholesale

All items are cone 10 porcelain.

All are dishwasher and microwave safe

Botanical images are fired decals.

Zaximo Studios  
Michelle Hamilton  
1017 Winwood Dr.  
St. Louis, MO 63124  
314.761.5460

Additional product can be viewed at [www.zaximo.com](http://www.zaximo.com) prices upon request.



### SMALL NESTING BOWLS

Porcelain  
4"x 2", 3.5"x 1.75", 3"x1.5"  
Number: A38  
Wholesale: \$20.00 set



### BOTANICAL CUPS

Porcelain with photo decals  
5.5" x 3.5"  
Number: B47  
Wholesale: \$20.00 each



### BUTTERFLY VASES

Porcelain with photo decals  
5" x 2.5" avg height  
Number: A45  
Wholesale: \$15.00 each



### BOTANICAL VASES

Porcelain with photo decals  
5" x 2.5" avg height  
Number: A72  
Wholesale: \$15.00 each



### BOTANICAL CUP

Porcelain with photo decals  
5"x 3.5"  
Number: B15  
Wholesale Each: \$20



### SMALL NESTING BOWLS

Porcelain  
4"x 2", 3.5"x 1.75", 3"x1.5"  
Number: A62  
Wholesale: \$20.00 set



### CUP WITH 24K GOLD CONFETTI

Porcelain cups w/ 24k gold confetti 4"x3.5"  
Number: C8  
Wholesale: \$20



### BOTANICAL PITCHER

Porcelain pitcher applied decal image  
9.5"x 8"  
Number: B 18  
Wholesale: \$40



### Botanical Bowls

4"x 3.5"  
Number(s): A189, A199, A201  
Wholesale Each: \$13.00

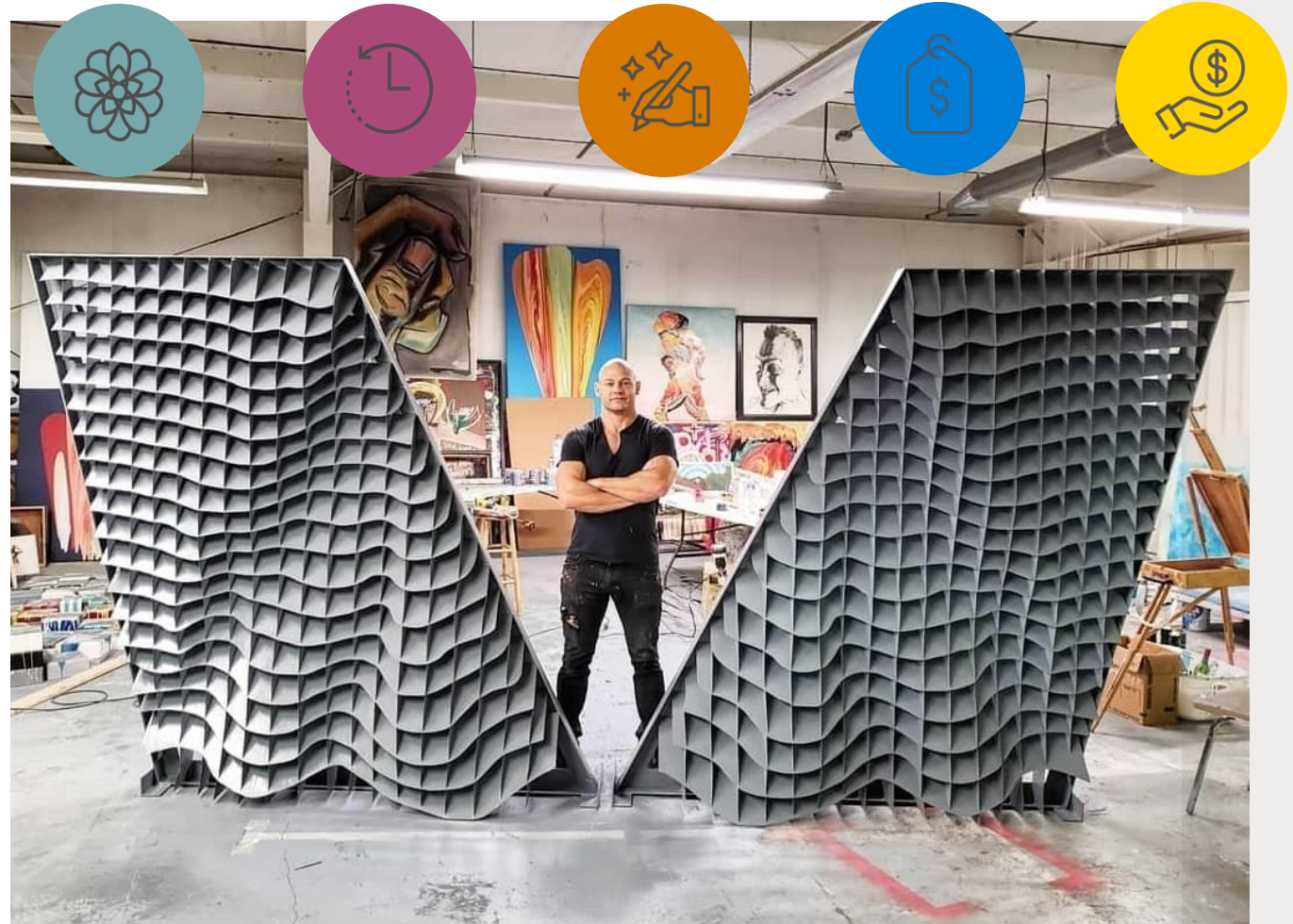
<https://www.zaximo.com/>

- Contact information
- Photos of available artwork
- Dimensions
- Medium
- Pricing
- Additional details
- How to purchase
- URL to online portfolio

## THE BUSINESS OF ART



- Flexibility
- Subject Matter
- Timeline
- Conceptual Drawings
- Wholesale Pricing
- Get Paid
- Photography
- NDA
- Terms & Conditions







Zack Smithey | St. Charles, MO

<https://www.zacksmithey.com/>

spellman brady & company

# HOW TO SUBMIT

 who we are  what we do  our work  contact

if you are interested in having spellman brady consider your work for our clients, please submit your contact information and examples of your work below.

name\*

email address\*

subject\*

comments

upload up to 10 PDFs, jpegs or pngs

No file chosen

No file chosen

No file chosen

No file chosen

No file chosen

No file chosen

No file chosen

No file chosen

No file chosen

No file chosen

Visit our URL



<https://www.spellmanbrady.com/art/>

## RESOURCES



[Missouri Department of Revenue](#)

[Volunteer Lawyers and Accountants for the Arts](#)

[Art Law Podcast](#)

[United States Patent and Trademark Office](#)

[Art St. Louis](#)

[Regional Arts Commission](#)

[Missouri Arts Council](#)

[National Endowment for the Arts](#)

[American For the Arts](#)

[Café Call For Entry](#)

[Entry Thingy](#)

[Critical Mass](#)

[Juried Art Services](#)

[Artrepreneur Coach Renee Phillips](#)

[Healing Power of Art](#)

THANK YOU

